

This article was downloaded by:

On: 28 January 2011

Access details: *Access Details: Free Access*

Publisher *Taylor & Francis*

Informa Ltd Registered in England and Wales Registered Number: 1072954 Registered office: Mortimer House, 37-41 Mortimer Street, London W1T 3JH, UK



Physics and Chemistry of Liquids

Publication details, including instructions for authors and subscription information:

<http://www.informaworld.com/smpp/title~content=t713646857>

Is MgB_2 a BCS-like charged superfluid?

G. G. N. Angilella^a; N. H. March^{bc}; R. Pucci^a

^a Dipartimento di Fisica e Astronomia, Università di Catania, and CNR-INFM-MATIS, and CNISM,

UdR Catania, and INFN, Sez. Catania, I-95123 Catania, Italy ^b Oxford University, Oxford, UK ^c

Department of Physics, University of Antwerp, B-2020 Antwerp, Belgium

To cite this Article Angilella, G. G. N. , March, N. H. and Pucci, R.(2006) 'Is MgB_2 a BCS-like charged superfluid?', *Physics and Chemistry of Liquids*, 44: 2, 213 – 216

To link to this Article: DOI: 10.1080/00319100600644052

URL: <http://dx.doi.org/10.1080/00319100600644052>

PLEASE SCROLL DOWN FOR ARTICLE

Full terms and conditions of use: <http://www.informaworld.com/terms-and-conditions-of-access.pdf>

This article may be used for research, teaching and private study purposes. Any substantial or systematic reproduction, re-distribution, re-selling, loan or sub-licensing, systematic supply or distribution in any form to anyone is expressly forbidden.

The publisher does not give any warranty express or implied or make any representation that the contents will be complete or accurate or up to date. The accuracy of any instructions, formulae and drug doses should be independently verified with primary sources. The publisher shall not be liable for any loss, actions, claims, proceedings, demand or costs or damages whatsoever or howsoever caused arising directly or indirectly in connection with or arising out of the use of this material.

Letter

Is MgB_2 a BCS-like charged superfluid?

G. G. N. ANGILELLA*[†], N. H. MARCHI[‡]§ and R. PUCCI[†]

[†]Dipartimento di Fisica e Astronomia, Università di Catania,
and CNR-INFM-MATIS, and CNISM, UdR Catania,
and INFN, Sez. Catania, Via S. Sofia, 64, I-95123 Catania, Italy
[‡]Oxford University, Oxford, UK

§Department of Physics, University of Antwerp,
Groenenborgerlaan 171, B-2020 Antwerp, Belgium

(Received in final form 18 February 2006)

Two complementary mechanisms have been proposed for relatively high temperature superconductor MgB_2 . While the first is the electron–phonon mechanism of BCS theory, advocated strongly by Pickett and co-workers, the second, by Bianconi *et al.*, invokes Feshbach shape resonances. While we cannot presently discount the second mechanism, and while both proposals exploit the multiband nature of the electronic structure of MgB_2 , we show here that five body-centred cubic (bcc) transition metals, whose superconducting transition temperature correlate intimately with elastic constants and therefore are plainly BCS-like in character, lie on a curve which has MgB_2 at the high T_c end. Any alternative mechanism to electron–phonon interaction in MgB_2 will need to account quantitatively for this circumstance.

Keywords: Electron–phonon mechanism; Superfluid MgB_2

In a recent study [1], we have related the superconducting transition temperature T_c of five body-centred cubic (bcc) transition metals to elastic constants and especially to the so-called Cauchy deviation (see figure 1). Here, we want to relate such results for these BCS-like transition metals to recent work on MgB_2 , with a relatively high transition temperature $T_c = 39$ K [2].

To do this, we show in figure 2, for comparison with figure 1, the five bcc metals on a conventional BCS plot in which the transition temperature T_c is scaled with the Debye temperature Θ_D [3]. Unlike figure 1, where the five bcc metals are ordered via the elastic constants precisely with their transition temperatures, figure 2 has a less simple ordering, even though these five metals lie on a (scaled) BCS-like plot.

*Corresponding author. E-mail: giuseppe.angilella@ct.infn.it

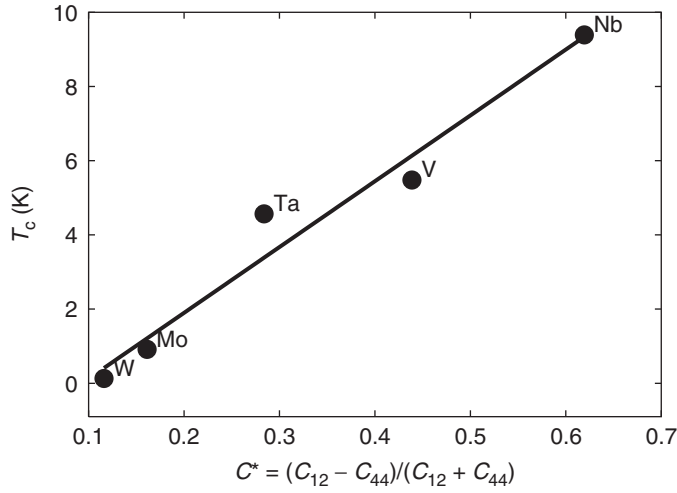


Figure 1. Critical temperature T_c of five bcc transition metals, correlated with Cauchy deviation $C^* = (C_{12} - C_{44})/(C_{12} + C_{44})$, C_{ij} being elastic constants. Redrawn after Ref. [1].

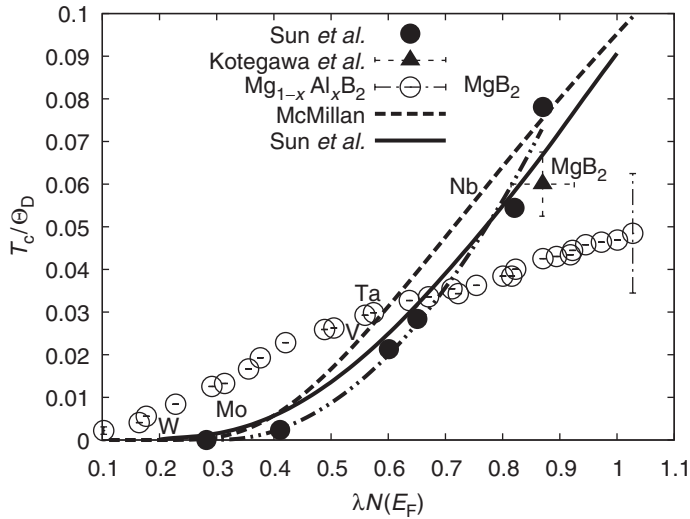


Figure 2. Critical temperature T_c scaled with Debye temperature Θ_D vs. $\lambda N(E_F)$, for five bcc superconducting elements, and MgB_2 . Filled circles are data as collected by Sun *et al.* (see Ref. [8], and refs. therein, including Kotegawa *et al.* [13] for MgB_2). Filled triangle is directly constructed from data by Kotegawa *et al.* [8] (notice discrepancy with datum for MgB_2 as reported by Sun *et al.* [8]). Open circles refer to $\text{Mg}_{1-x}\text{Al}_x\text{B}_2$ ($x = 0.00 - 0.50$), with T_c taken from figure 1 of Ref. [12], $\Theta_D \propto \omega_{E_{2g}}$ taken from figure 3 of Ref. [12], and $\lambda N(E_F)$ identified with $\lambda_{\sigma\sigma}$ as plotted in figure 4 of Ref. [12]. The error bars have been constructed only for the two end points at $x = 0.00$ (MgB_2) and $x = 0.50$ ($\text{Mg}_{0.5}\text{Al}_{0.5}\text{B}_2$, the latter error bar being almost invisible on the present scale). Dashed line is McMillan's formula, equation (1), valid for $\lambda N(E_F) \lesssim 1$, while solid line is a strong-coupling generalization thereof, due to Sun *et al.* [8]. Dashed-dotted line is a guide to the eye, referred to in the text.

The main focus of this article is to examine how MgB_2 relates to these five bcc metals from the point of view of the BCS mechanism of electron–phonon interaction. This mechanism has been strongly advocated by Pickett and co-workers [4,5], though the electron–phonon interaction has to be surprisingly strong to yield the measured transition temperature $T_c = 39.4\text{ K}$. However, we have added to the BCS-like plot in figure 2 this material MgB_2 , and this lies on the scaled BCS-like curve, both within McMillan’s approximation [6,7]

$$T_c = 1.14\Theta_D \exp \frac{-1.04[1 + \lambda N(E_F)]}{\lambda N(E_F) - \mu^*[1 + 0.62\lambda N(E_F)]}, \quad (1)$$

with Coulomb pseudopotential $\mu^* = 0.1$, and within a recent strong-coupling generalization thereof, due to Sun *et al.* [8] (see also Ref. [9]). In figure 2, we have used the quantity $\lambda N(E_F)$, where λ measures the strength of the electron–phonon interaction and $N(E_F)$ represents the density of states at the Fermi energy E_F . This supports the view of Pickett and co-workers that MgB_2 is a BCS-like superfluid.

We note here the interesting proposal of Bianconi and co-workers, where T_c is correlated crucially with features of the band structure of the layered material MgB_2 [10,11]. This is proposed as a complementary mechanism to that of Pickett and co-workers. That, we feel, would require to attribute to ‘an accident’ the correlation shown in figure 2 in which MgB_2 indeed fits smoothly on the BCS-like curves of T_c/Θ_D versus $\lambda N(E_F)$.

While, because of comparison between the BCS mechanism and that proposed by Bianconi *et al.* [10], we have added cases for $\text{Mg}_{1-x}\text{Al}_x\text{B}_2$ to figure 2 (see Ref. [12] and refs. therein), we must stress that the five bcc metals plus MgB_2 are ordered crystals. With doping, disorder will affect the nature of electron states with precursor effects reflecting a tendency towards Anderson localization. The five bcc ordered crystals lie well on a curve with MgB_2 (dashed-dotted line in figure 2), taking account of the ‘scatter’ between the data for MgB_2 of Sun *et al.* [8] and of Kotegawa *et al.* [13].

To conclude, it is important to add that Feshbach resonances have been proposed by Bianconi and co-workers [10] as a complementary mechanism to that of An and Pickett [4,5]. Both references [10] and [11] invoke the multiband nature of the electronic structure of MgB_2 . Though the Feshbach resonance proposal cannot be discounted as a possible alternative to the electron–phonon mechanism advocated by An and Pickett [4,5] and other authors, the proximity of MgB_2 to the curve containing the five bcc transition metals shown in figure 2, which materials are manifestly superconducting due to an electron–phonon mechanism from figure 1, would have to be accounted for by any such alternative mechanism as put forward by Bianconi *et al.* [10].

Acknowledgements

One of the authors (NHM) thank Professor A. Bianconi for a very stimulating discussion of his proposal for an alternative pairing mechanism in MgB_2 to that favoured by An and Pickett [4]. NHM acknowledges that his contribution to this study was made during a stay in the Department of Physics and Astronomy,

University of Catania, and thanks Professors F. Catara, R. Pucci and E. Rimini for generous hospitality.

References

- [1] G.G.N. Angilella, N.H. March, R. Pucci. *Eur. Phys. J. B*, **39**, 427 (2004).
- [2] J. Nagamatsu, N. Nakagawa, T. Muranaka, Y. Zenitani, J. Akimitsu. *Nature (London)*, **410**, 63 (2001).
- [3] J.R. Schrieffer. *Theory of Superconductivity*, W.A. Benjamin, New York (1964).
- [4] J.M. An, W.E. Pickett. *Phys. Rev. Lett.*, **86**, 4366 (2001).
- [5] W.E. Pickett. *Braz. J. Phys.*, **33**, 695 (2003).
- [6] W.L. McMillan. *Phys. Rev.*, **167**, 331 (1968).
- [7] P.B. Allen, R.C. Dynes. *Phys. Rev. B*, **12**, 905 (1975).
- [8] L. Sun, X.X. Dai, J.X. Dai. *J. Low Temp. Phys.*, **139**, 419 (2005).
- [9] X.X. Dai, W.E. Evenson. *Phys. Rev. E*, **65**, 026118 (2002).
- [10] A. Bianconi, D.D. Castro, S. Agrestini, G. Campi, N.L. Saini, A. Saccone, S.D. Negri, M. Giovannini. *J. Phys.: Condens. Matter*, **13**, 7383 (2001).
- [11] G.G.N. Angilella, A. Bianconi, R. Pucci. *J. Supercond.*, Preprint cond-mat/0503544 (2005).
- [12] G.A. Ummarino, R.S. Gonnelli, S. Massidda, A. Bianconi. *Physica C*, **407**, 121 (2004).
- [13] H. Kotegawa, K. Ishida, Y. Kitaoka, T. Muranaka, N. Nakagawa, H. Takagiwa, J. Akimitsu. *Phys. Rev. B*, **66**, 064516 (2002).